

BXUV.G543

Fire Resistance Ratings - ANSI/UL 263

[Page Bottom](#)

[Notice of Disclaimer](#)

Previous Page

Fire Resistance Ratings - ANSI/UL 263

[Guide Information](#)

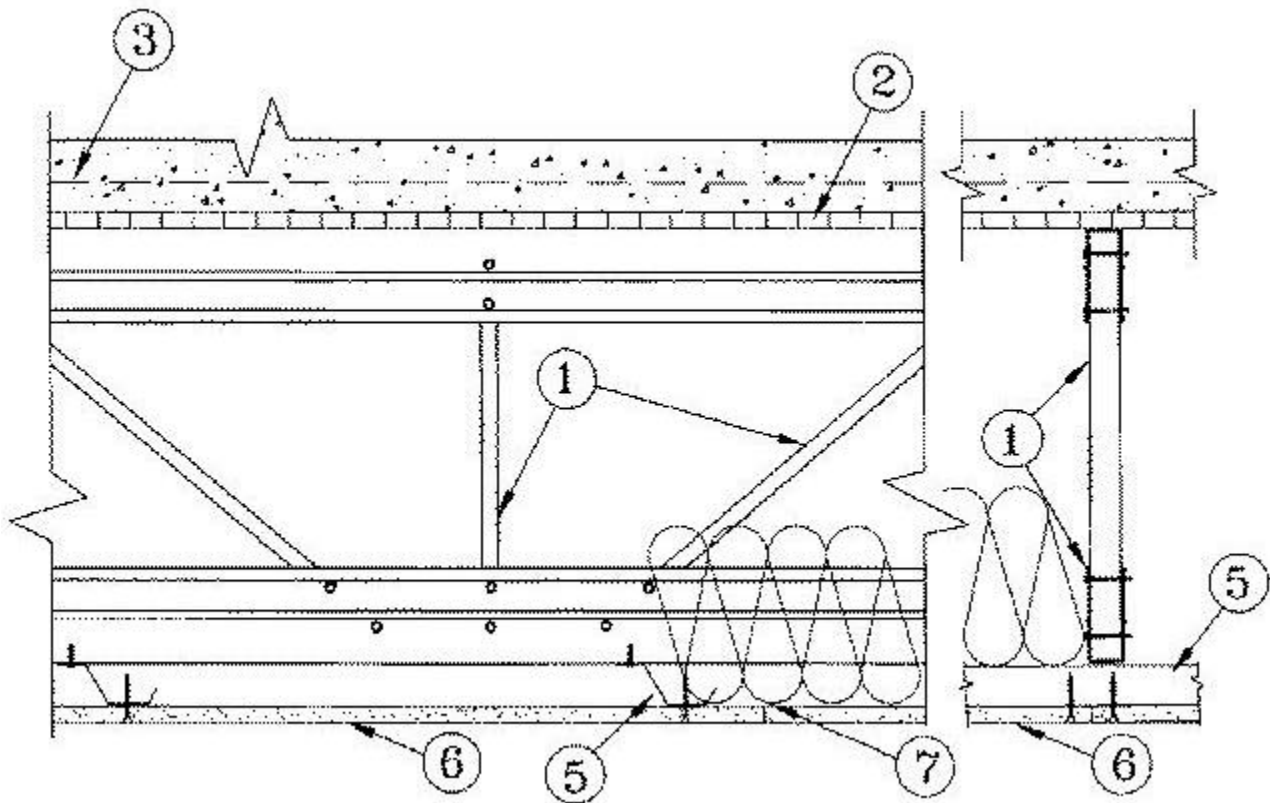
Design No. G543

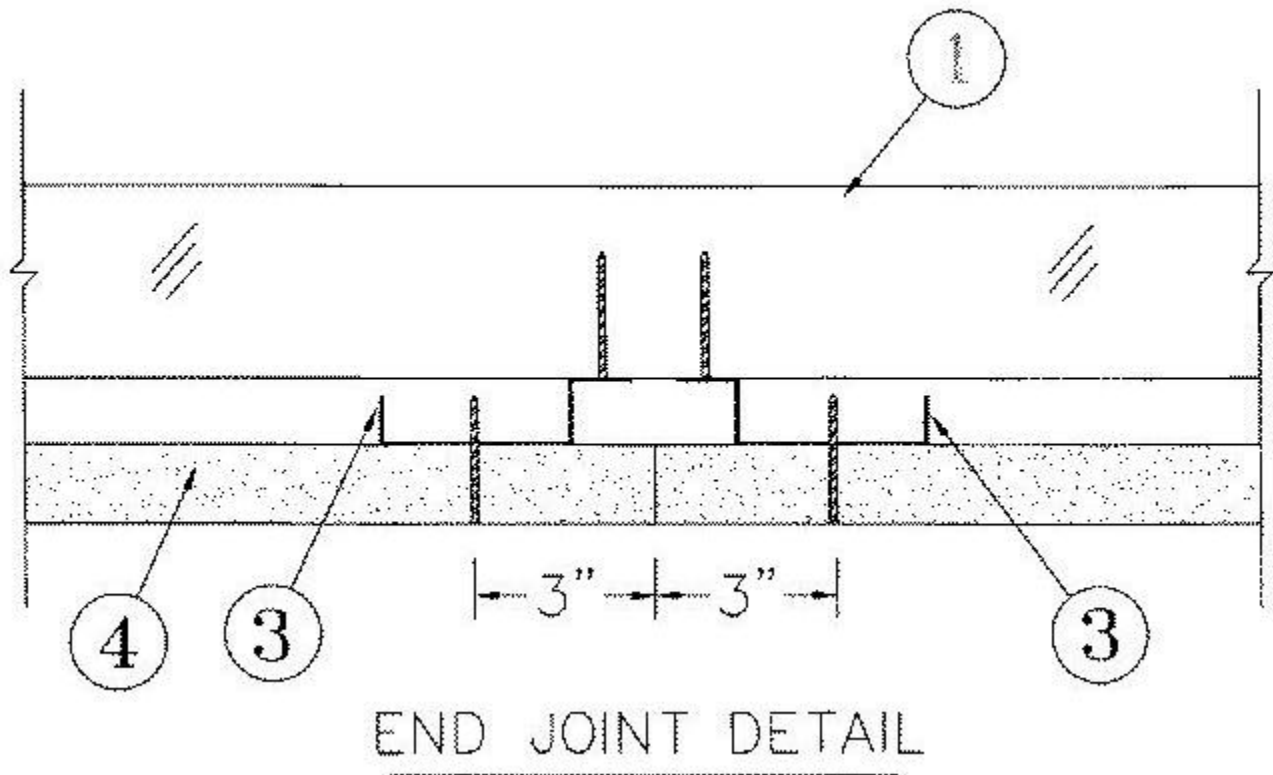
November 10, 2000

Restrained Assembly Rating-1 Hr

Unrestrained Assembly Rating-1 Hr

Unrestrained Beam Rating-1 Hr





1. **Structural Steel Members*** Pre-fabricated light gauge steel truss system consisting of cold-formed, galvanized steel chord and web members. Trusses fabricated in various sizes, depths, and from various steel thicknesses. Trusses spaced a max of 48 in. O.C.

ALLIED STUDCO — Amkey System, Pre-fabricated Light Gauge Steel Truss System

2. **Metal Lath** 3/8 in. rib, 3.4 lb per sq yd expanded steel lath tied to each truss at every other rib and midway between trusses at side laps with 18 SWG galv steel wire. As an alternate, the form material for the concrete may be corrugated steel deck, min 9/16 in. deep, 28 MSG galv steel, mechanically fastened to trusses 15 in. OC. The concrete topping thickness shall be measured to the top plane of the steel deck.

3. **Welded Wire Fabric** 6 by 6 in., 10/10 SWG

4. **Normal Weight or Lightweight Concrete** Min 2 in. carbonate or siliceous aggregate, 150 lb/m³ @ 3 pcf unit weight, 3000 psi compressive strength. Lightweight concrete, expanded shale, clay or slate aggregate by rotary kiln method, 117 lb/m³ @ 3 pcf unit weight, 3000 psi compressive strength.

5. **Resilient Channels** Formed of 25 MSG galv steel, installed perpendicular to the steel trusses (Item 1), spaced a max of 16 in. OC when no insulation (Item 7 or 7A) is fitted in the concealed space, or a max of 12 in. OC when insulation (Item 7

or 7A) is fitted in the concealed space, draped over the resilient channel/gypsum wallboard ceiling membrane. Two courses of resilient channel positioned 6 in. OC at wallboard butt-joints (3 in. from each end of wallboard). Channels oriented opposite at wallboard butt-joints. Channel splices overlapped 4 in. beneath steel trusses. Channels secured to each truss with Type S12 by 1/2 in. long screws.

6. Gypsum Board* One layer of nom 5.8 in. thick by 48 in. wide boards, installed with long dimension parallel to trusses. Attached to the resilient channels using 1 in. long Type S bugle-head screws. Screws spaced a max of 12 in. OC along butted end-joints and in the field when no insulation (Item 7 or 7A) is fitted in the concealed space, or a max of 8 in. OC along butted end-joints and in the field when insulation (Item 7 or 7A) is fitted in the concealed space, draped over the resilient channel/gypsum wallboard ceiling membrane.

CANADIAN GYPSUM COMPANY — Types C, IP-X2, IPC-AR.

UNITED STATES GYPSUM CO — Types C, IP-X2, IPC-AR.

YESO PANAMERICANO S A DE C V — Types C, IP-X2, IPC-AR.

7. Batts and Blankets* Optional —Any thickness mineral wool or glass fiber insulation bearing the UL Classification Marking for Surface Burning Characteristics, having a flame spread value of 25 or less and a smoke spread value of 50 or less. Insulation fitted in the concealed space, draped over the resilient channel/gypsum wallboard ceiling member.

7A. Loose Fill Material* As an alternate to Item 7 — Any thickness of loose fill material bearing the UL Classification Marking for Surface Burning Characteristics, having a flame spread value of 25 or less and a smoke spread value of 50 or less. Loose fill material fitted in the concealed space, draped over the resilient channel/gypsum wallboard ceiling membrane.

8. Finishing System (Not Shown)—Vinyl, dry or premixed joint compound, applied in two coats to joints and screw-heads; paper tape, 2 in. wide, embedded in first layer of compound over all joints. As an alternate, nom 3/32 in. thick veneer plaster may be applied to the entire surface of the gypsum wallboard.

9. Bridging (Not Shown)—Location of lateral bracing for truss chord and web members to be specified on truss engineering.

*Bearing the UL Classification Marking

[Page Top](#)

[Notice of Disclaimer](#)

Previous Page

[UL Listed and Classified Products](#) [UL Recognized Components](#) [Products Certified for Canada](#)

This page and all contents are Copyright © 2001 by Underwriters Laboratories Inc.®

The appearance of a company's name or product in this database does not in itself assure that products so identified have been manufactured under UL's Follow-Up Service. Only those products bearing the UL Mark should be considered to be Listed and covered under UL's Follow-Up Service. Always look for the Mark on the product.